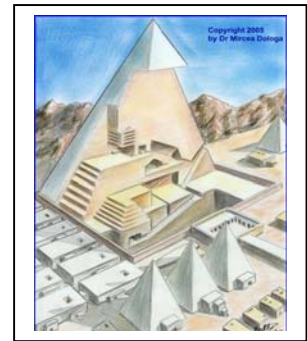
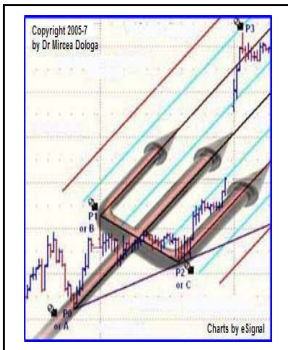


World Charting REPORT

using *Integrated Pitchfork Analysis*



by Dr Mircea Dologa, MD, CTA

MORNING of May 12th – 2008

The traders must progressively monitor the conditions of the market movements that validate or invalidate the recommended forecasts. The market forecasts of this study have a very high probability, but they might not be exact. An astute trader always trades the market behaviour, not only the forecasts. *Go with the market, let it be your guide and never impose anything on its behaviour.*

Our research strongly suggests a “top-down” market analysis rather than other procedures. In our opinion, the performed studies with *Cash Index* data are more illustrative than those with *Futures Index* data. However, due to our *Futures* trading preferences, we will use every time, the most adequate data, for that specific traded vehicle.

1. Dow Jones Industrial Average Index – DJIA





2. S&P 500 Index





3. German Dax Index

DAXI Weekly Angles +++ - ©2008 eSignal, Inc.

(\$DAX-XET - DAX (PERFORMANCE-INDEX),W) Dynamic,0:00-24:00

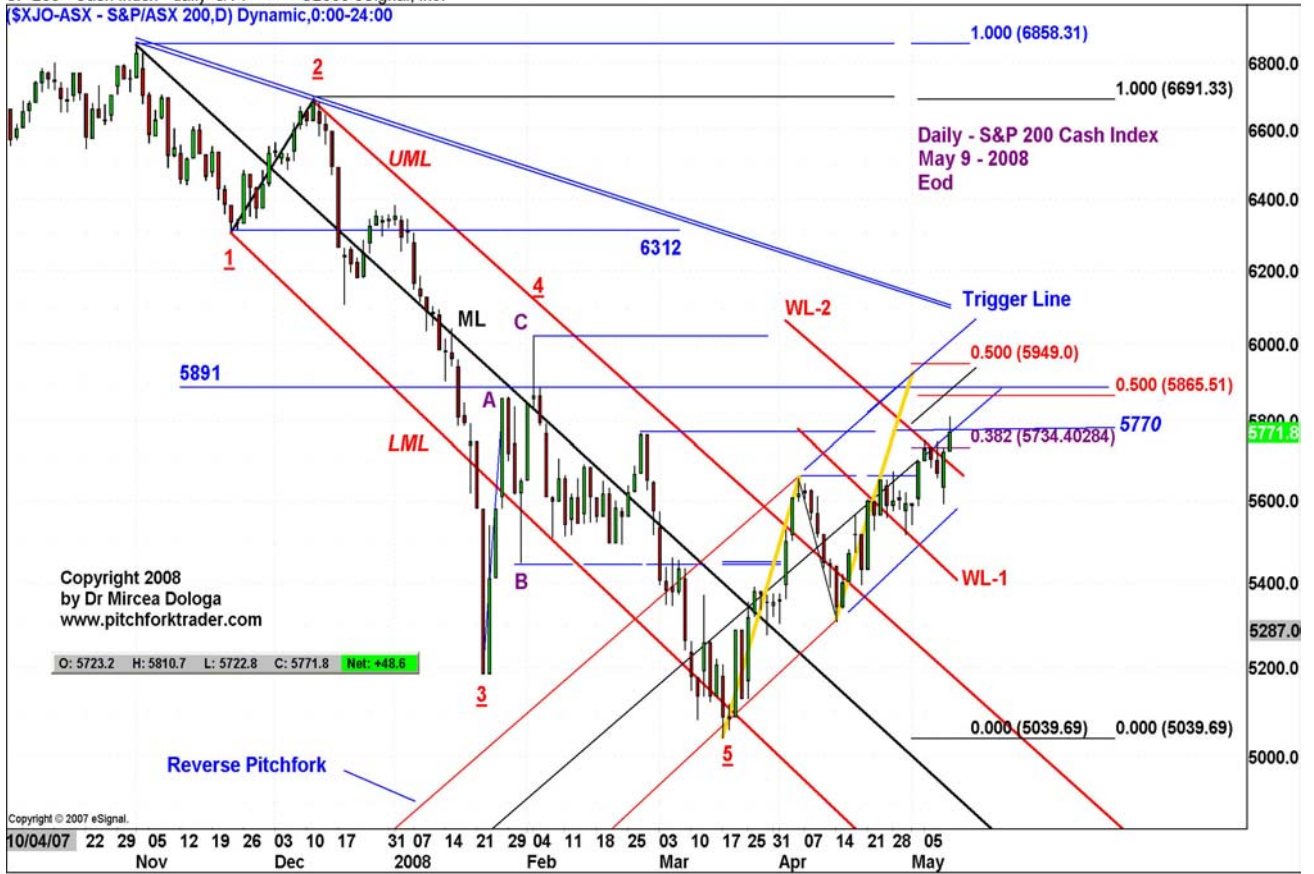


Dax daily & BB x 1 +++ - ©2008 eSignal, Inc.

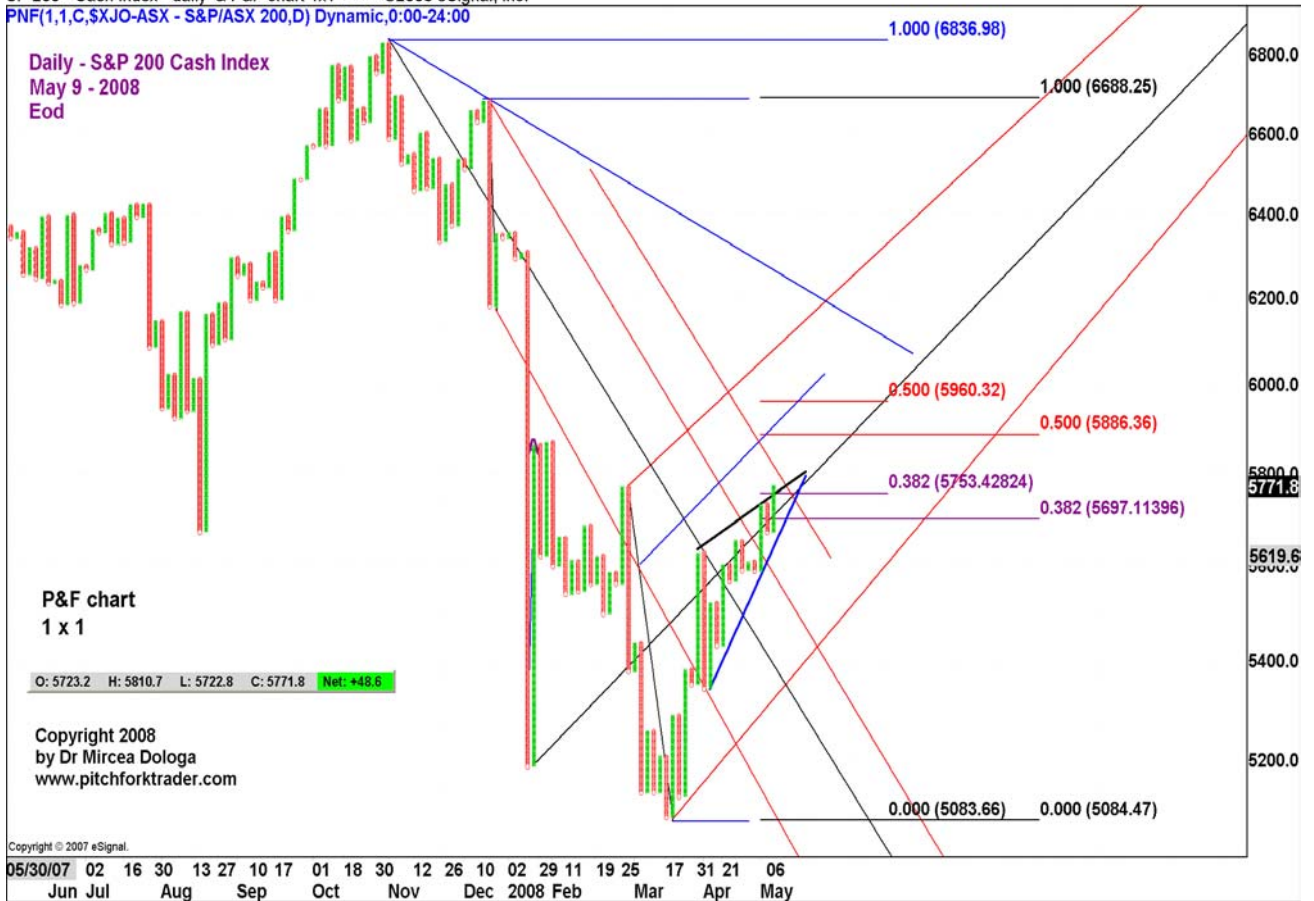
(AX M8-DT - DAX,D) Dynamic,0:00-24:00



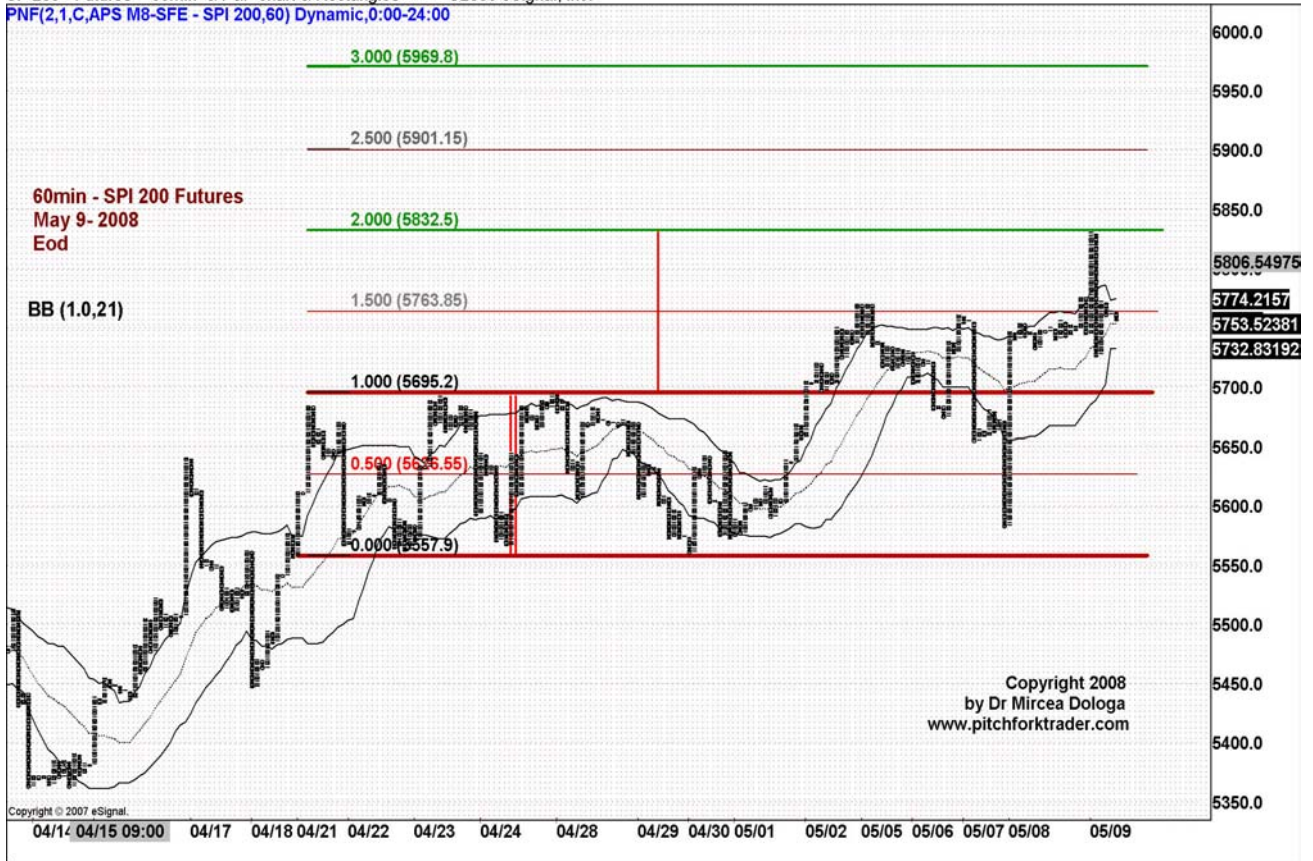
SP 200 - Cash Index - daily & PF +++ - ©2008 eSignal, Inc.
 [\$XJO-ASX - S&P/ASX 200,D] Dynamic,0:00-24:00



SP 200 - Cash Index - daily & P&F chart 1x1 +++ - ©2008 eSignal, Inc.
 PNF(1,1,C,\$XJO-ASX - S&P/ASX 200,D) Dynamic,0:00-24:00



SP 200 - Futures - 60min & P&F chart & Rectangles +++ - ©2008 eSignal, Inc.
 PNF(2,1,C,APS M8-SFE - SPI 200,60) Dynamic,0:00-24:00



5. Euro/Usd Futures - Major Currency

EURUSD weekly ++ - ©2008 eSignal, Inc.
 {6E #F - EURO FUTURES - GLOBEX,W) Dynamic,0:00-24:00



EURUSD daily + - ©2008 eSignal, Inc.

[6E #F - EURO FUTURES - GLOBEX,D) Dynamic,0:00-24:00



6. US Dollar Index - Major Currency

US dollar weekly +++ - ©2008 eSignal, Inc.

[7Y #F - US DOLLAR INDEX - GLOBEX,D) Dynamic,0:00-24:00





7. Gold Futures



Gold Futures - daily - Fibs Arcs +++ - ©2008 eSignal, Inc.
 (GC #F - GOLD,D) Dynamic,0:00-24:00



Gold Futures - daily - Horiz Triangle & ABC Pattern ++ - ©2008 eSignal, Inc.
 (GC #F - GOLD,D) Dynamic,0:00-24:00



Gold Futures - 15min - Fibs & BB x 1 - ©2008 eSignal, Inc.
 GC #F - GOLD,15) Dynamic,0:00-24:00

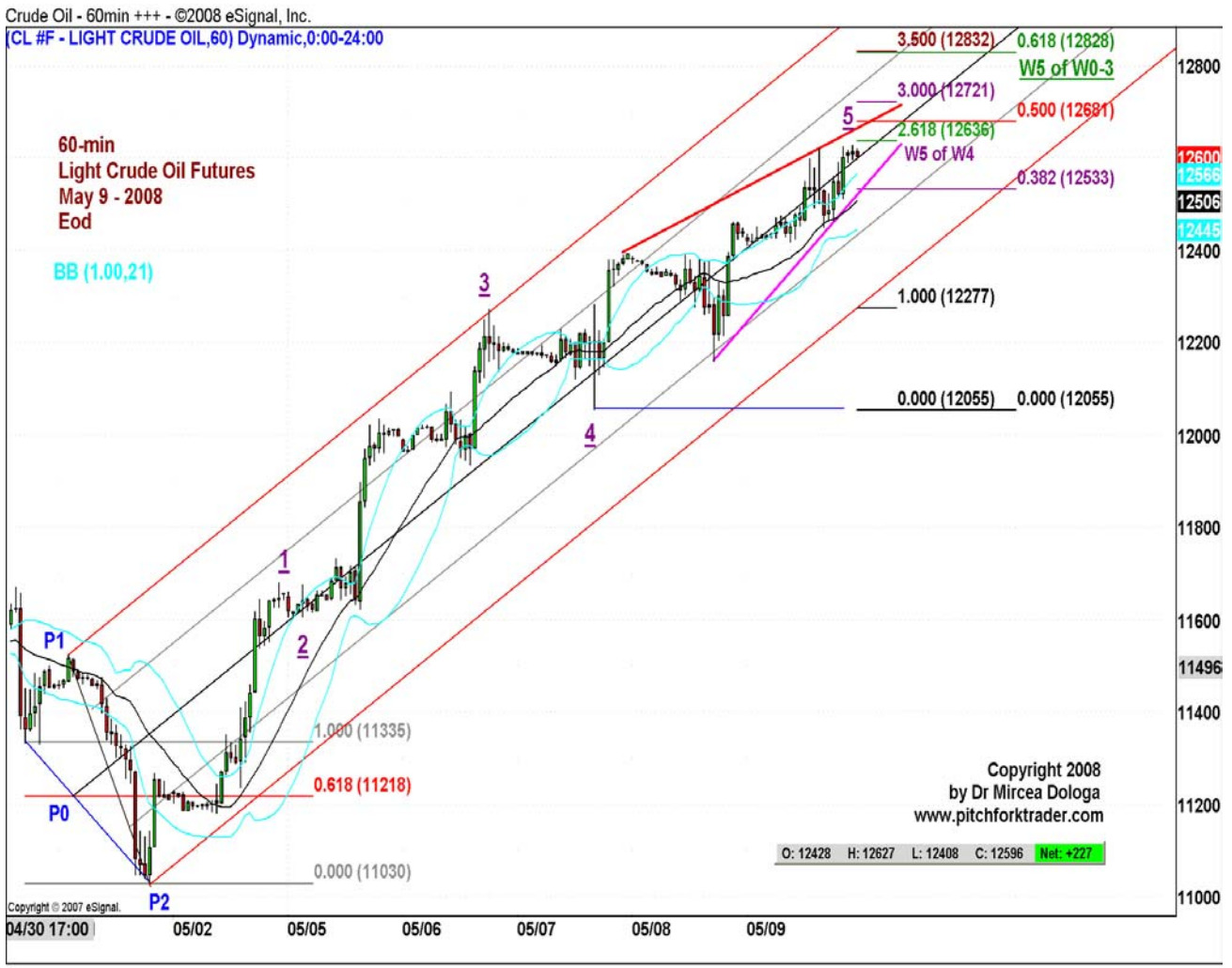


Gold Futures - 5min - P&F from Dawn's idea - Macro - Channels x 2 - ©2008 eSignal, Inc.
 PNF(1,1,C,GC #F - GOLD,15) Dynamic,0:00-24:00



8. Light Crude Oil Futures





Disclaimer

The purpose of this material is to provide you with a very powerful trading technique, named “Integrated Pitchfork Analysis“, a valuable tool in the financial markets. The text, the chart examples, or any part of this material are not to be taken as “investment advice”. They are purely and strictly for educational purposes. Ultimately, you are responsible for all of your investment decisions. The data used in this material is believed to be from reliable sources but cannot be guaranteed.

There is no guarantee that this tool will continue to work in the future. “Past performance is not indicative of future results”. You should understand that there is considerable risk of loss in the stock, futures or options markets. Neither the author, nor anyone else involved in the production of this material, will be liable for any loss, damage or liability directly or indirectly caused by the usage of this material.